

# The Three Parishes Plan – Adderley Parish



## Introduction

- Adderley has joined together with Moreton Say and Norton in Hales Parishes in producing the Three Parishes Neighbourhood Plan
- This profile covers the characteristics of people and households in Adderley Parish and draws on a number of data sources including the 2011 Census key statistics.
- In some cases comparisons are made between the parishes and Shropshire as a whole.

## Social and Demographic

- In 2011 there were 372 residents in Adderley.
- The percentage of school age population (ages 5-17) was at 14.5% (54 children)
- 62.4% of the population were aged 18-64 years.
- Overall the figures suggests that the population of Adderley is similar to the Three Parishes and County averages. The mean age at 43 years is similar to the Three Parishes (43.4 and 46 years respectively) and slightly older than the county averages (42.6 and 44 years respectively).

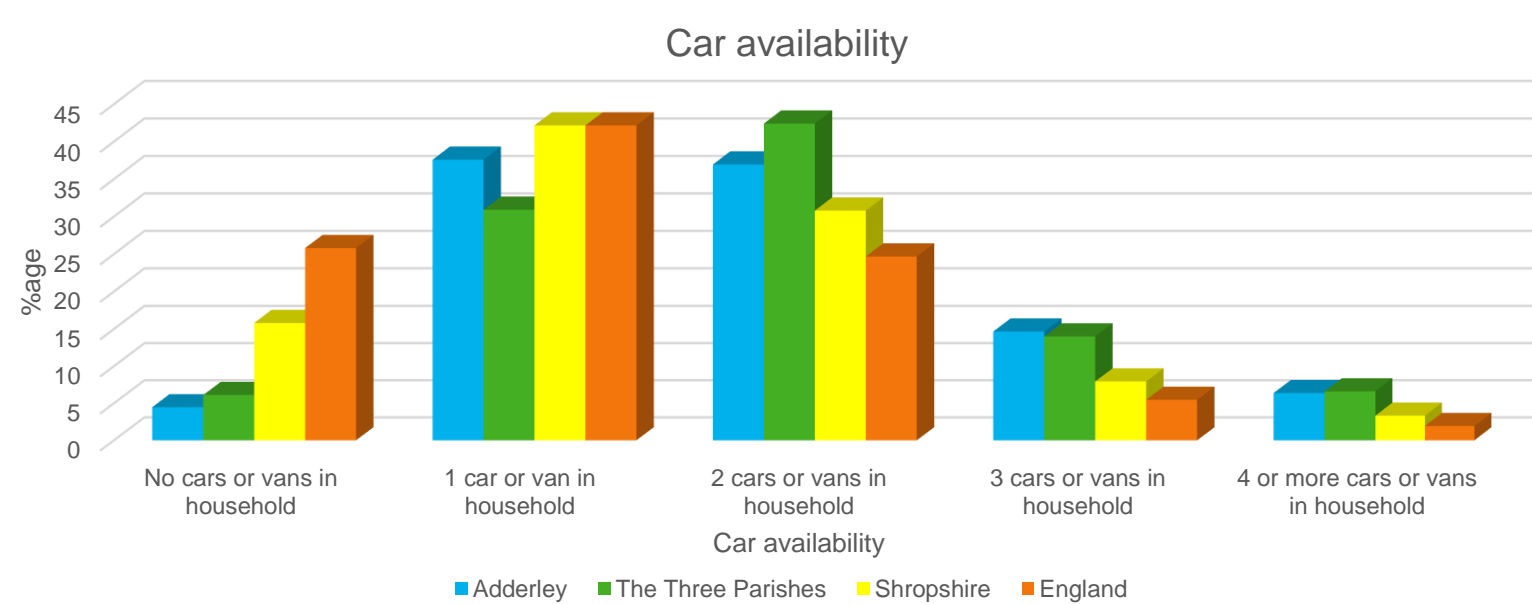
## Housing

	Adderley		The three Parishes combined	
	Number of Dwellings	%	Number of Dwellings	%
Detached house or bungalow	107	66.5	376	61.1
Semi-detached	36	22.4	185	30.1
Terraced (including end-terrace)	14	8.7	26	4.2
Flat, maisonette or apartment	4	2.4	22	3.6
Caravan or other mobile or temporary structure	0	0.0	6	1.0

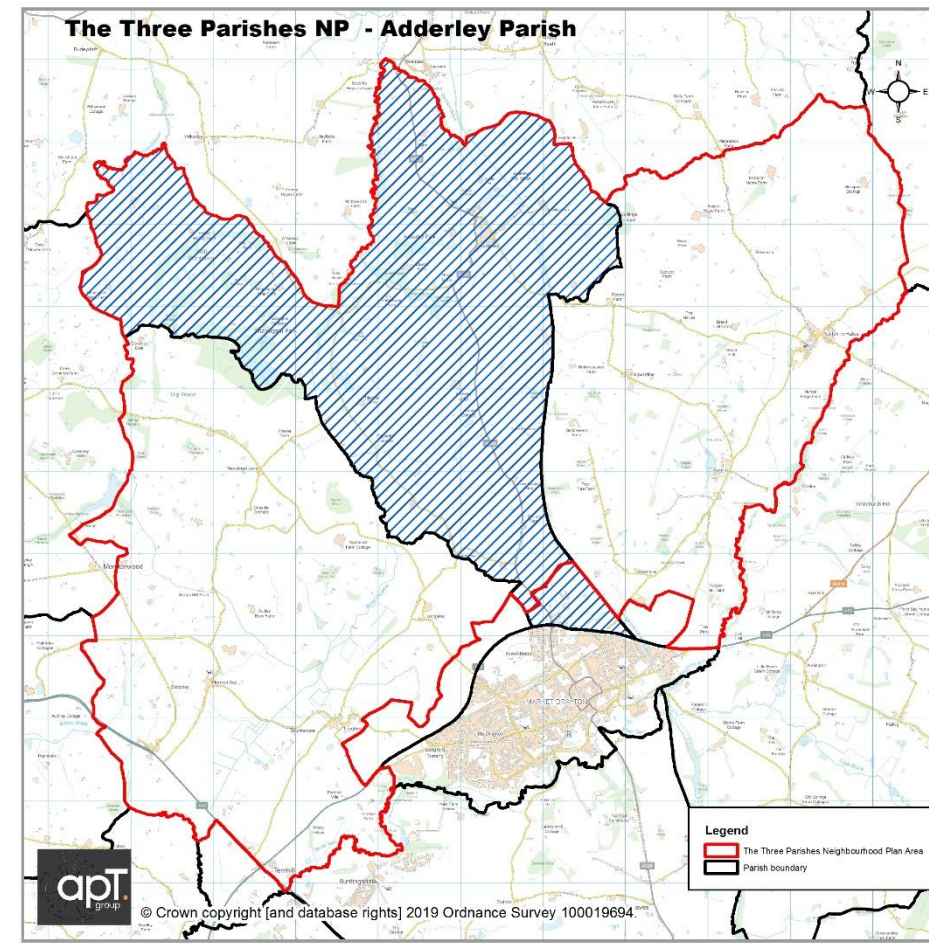
- The 2011 census showed that there were 161 dwellings in Adderley Parish.
- Most dwellings (66.5%) in Adderley were detached; 22.4% were semi-detached and 8.7% were terraced.
- Fewer flats and apartments in Adderley (2.4%) than Shropshire overall (9.6%).
- Adderley had the highest proportion of homes owned out-right across all Three Parishes, 69 dwellings (43.9%) in total.

## Connections

- 4.5% of households in Adderley did not own a car or van and are reliant on other forms of transport such as public transport services.
- Car ownership is high and there are no bus services in Adderley

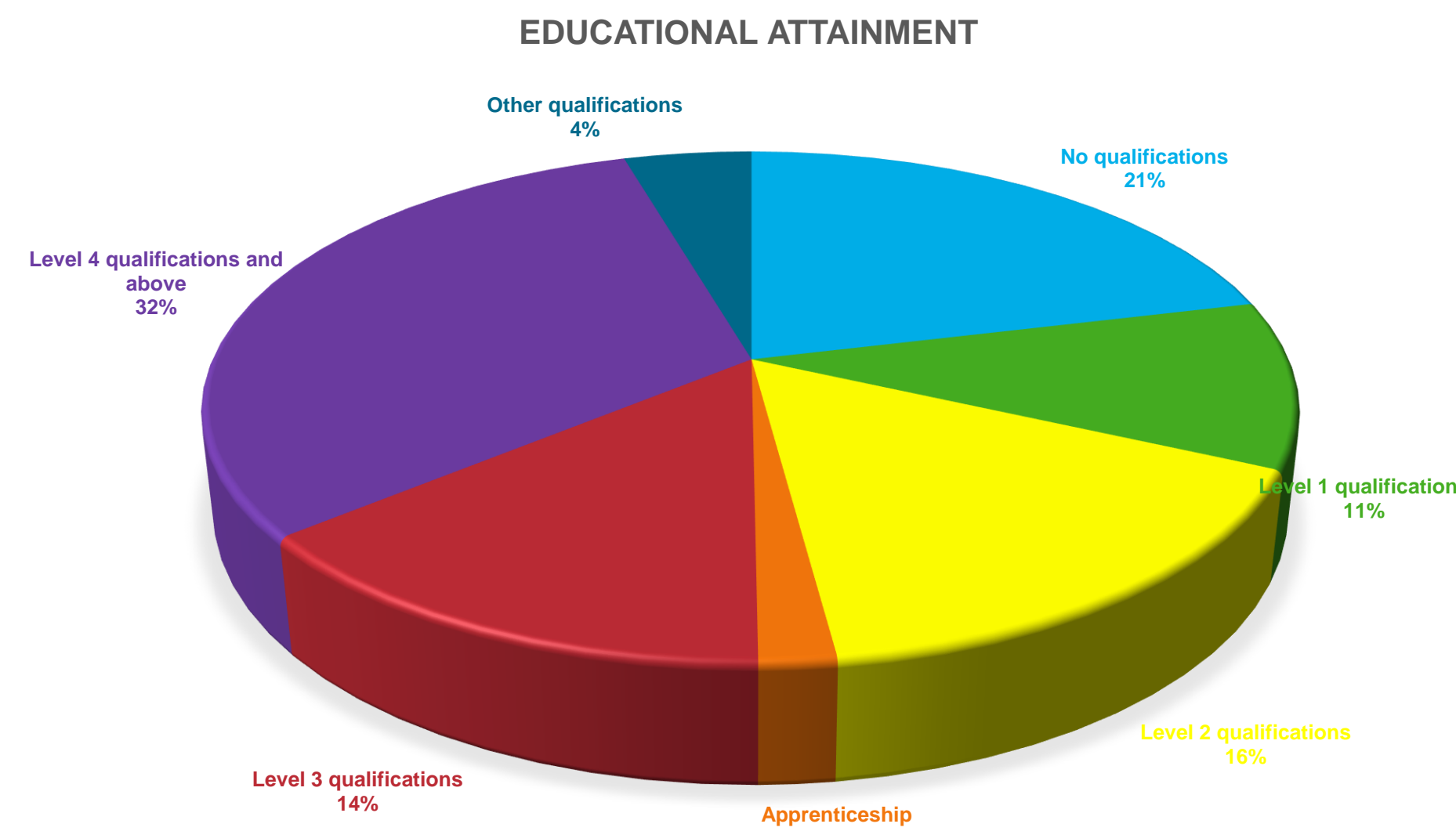


## Adderley Parish



## Education

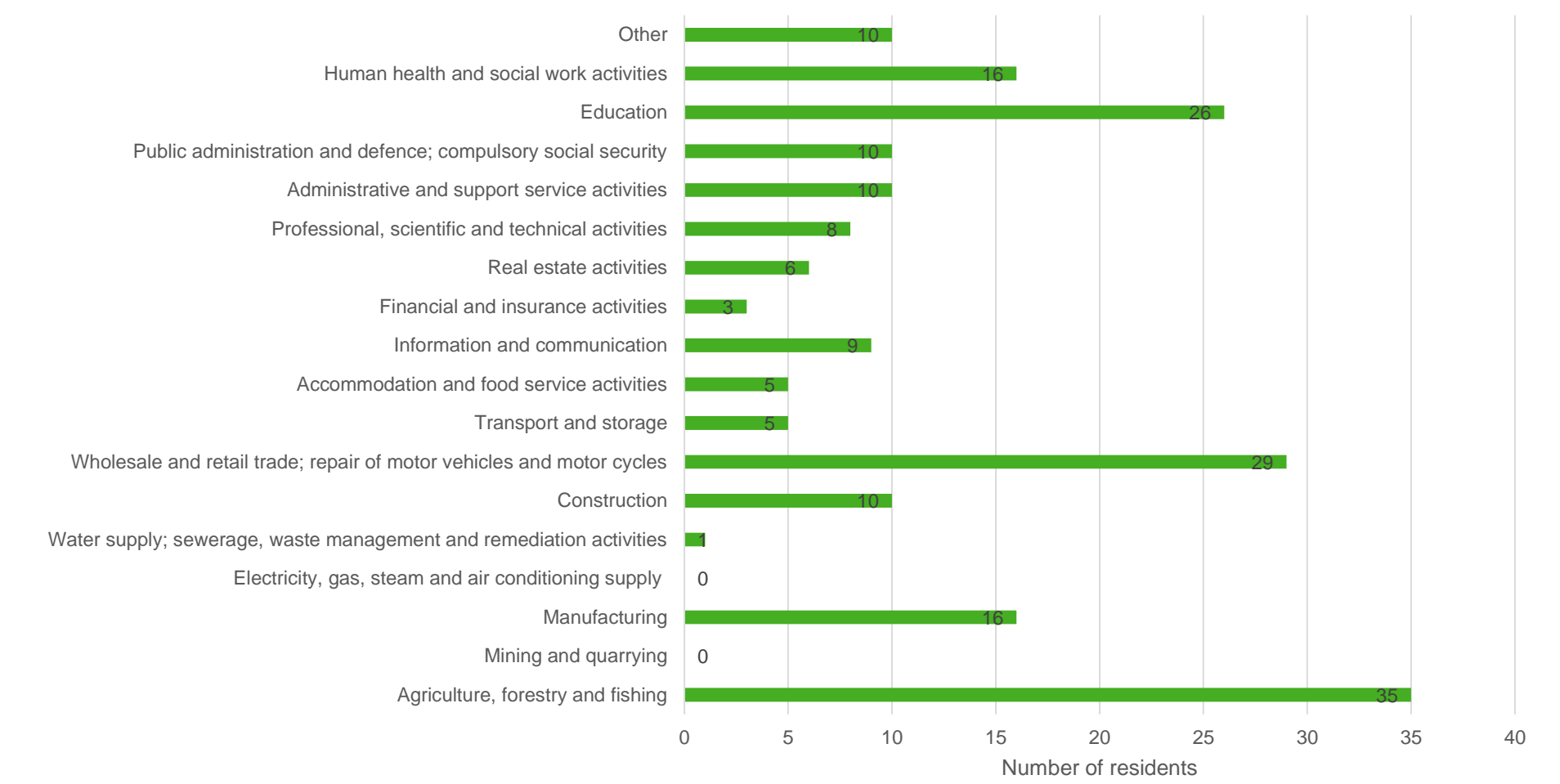
- 31.5% of parish residents have a level 4 qualification or higher, which is slightly lower than the to the Three Parishes (32.8%) and greater than Shropshire (27.5%).
- The proportion of residents with no qualifications (21.2%) is slightly lower than the Three Parishes (22.6%) and County (22.5%) averages.



## Conservation and Natural Environment

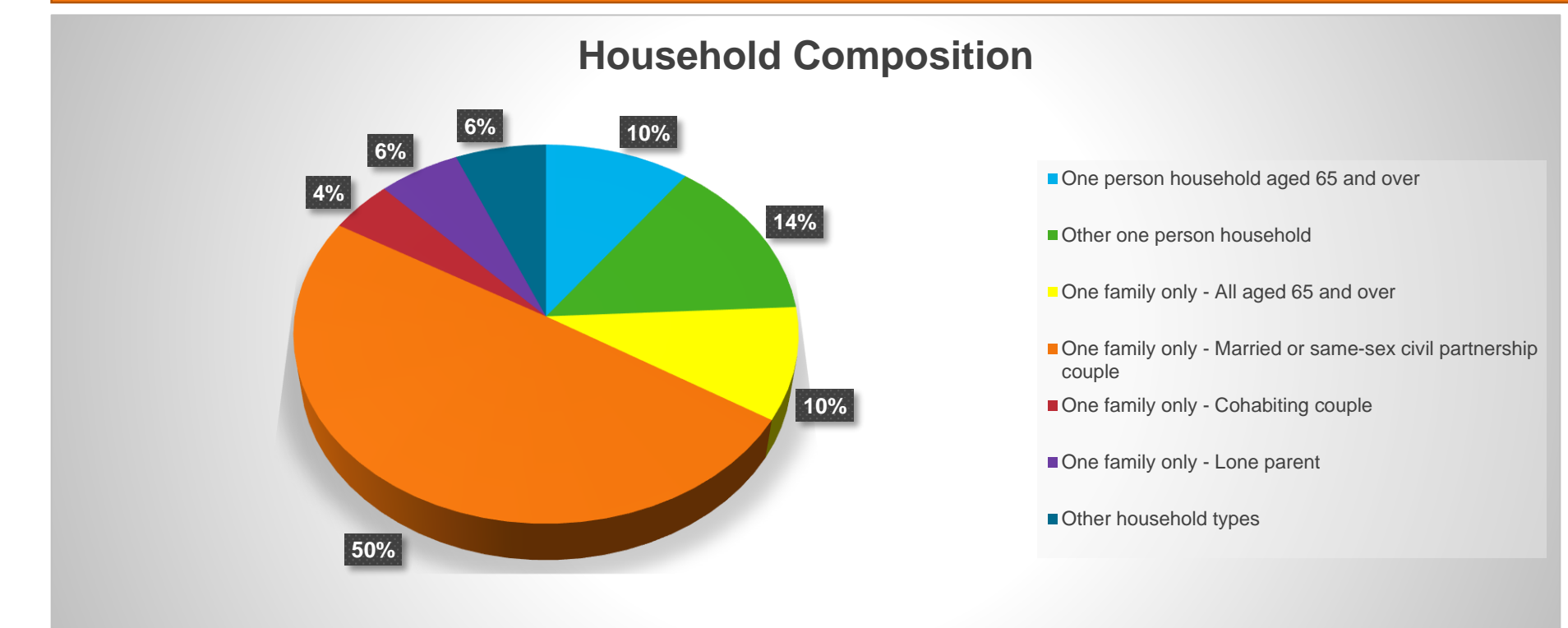
- The majority of Adderley is categorized within two landscape types:
  - Principal Timbered Farmlands; and
  - Settled Pastoral Farmlands
- Several listed buildings are located around Adderley village as well as a scheduled monument to the north of the village.

## Economy



- The majority of those employed in Adderley work in the agriculture (17.6%), wholesale and retail trade (14.6%) and education (13.1%).
- 70.6% (204) of residents aged 16-74 were economically active, a similar figure to the Three Parishes (72.6%) and Shropshire (71%) averages.
- Adderley has a greater proportion of self-employed residents than the county average (19.7% and 12.7% respectively).
- Adderley has a lower proportion of unemployed residents aged 16-74 (1%) than the Three Parishes (1.6%) and Shropshire (3.3%).

## Households



- Of the 157 households in Adderley, 69.4% were one family households.
- The proportion of one-person households in Adderley (24.2%) was greater than the Three Parishes (19.4%) but less than the County (28.9%) averages.
- There are fewer lone-parent households in Adderley parish (5.7%) than the Three Parishes (9.1%) and the county (8.5%) averages.

## Access to Services

- There is a service garage and quad bike dealership
- There is a local primary school – Adderley CE Primary School & Nursery. Nearest secondary school is in Market Drayton
- Church – St Peter's church
- Village hall
- Bowling green